

Switch between Tech and Dentist

Theramon Cloud

ORTHOSMART B.V.
VERSION 2019
6 MAY 2019

Switch between Tech and Dentist

Theramon Cloud

table of contents

2. SWITCH BETWEEN TECH AND DENTIST ENVIRONMENT	2
2.1 SWITCHING ENVIRONMENTS IN THE THERAMON CLOUD.....	2
2.2 SWITCHING BETWEEN TECH AND DENTIST IN THERAMON AZURE CLIENT.....	3

Switch between Tech and Dentist

Theramon Cloud

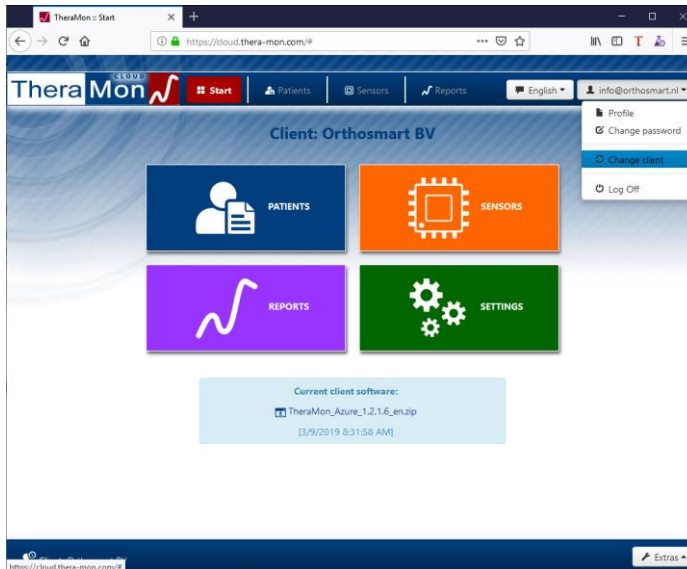
2. Switch between Tech and Dentist environment

In the Theramon Azure Client and the Theramon Cloud you have the ability to switch between the Tech- and Dentist environment. Each environment has it's own data.

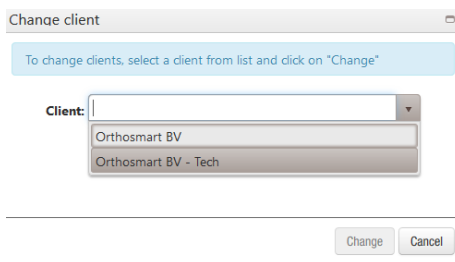
2.1 Switching environments in the Theramon Cloud

The following steps are needed to establish a connection between the Theramon Azure Client and the Theramon Cloud for the Tech or Dentist environments.

1. At the right of the screen you need to click on your username



2. Click on Change Client
3. Select the Tech client or Dentist client from the list. Client names ending with Tech are for the Tech environment.



4. click on change to switch between the Tech and Dentist environments.

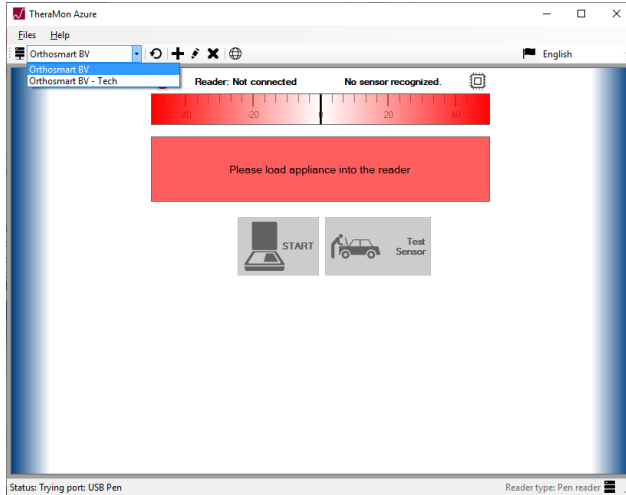
Switch between Tech and Dentist

Theramon Cloud

2.2 Switching between Tech and Dentist in Theramon Azure Client

Using the following steps you can switch between the Tech and Dentist environments in the Theramon Azure Client:

1. Click on the selection box in the Theramon Azure Client



2. Select the Dentist or Tech environment you want to use. All environments ending with Tech are Tech environments.

The Tech environment has a red color at the left and right parts of the screen. The Dentist environment shows a blue color at the left- and righthand side of the screen.