

Register and test a Chip

Theramon Cloud

ORTHOSMART B.V.
VERSION 2019
6 MAY 2019

Register and test a Chip

Theramon Cloud

Table of contents

2. REGISTER A CHIP WITH THE THERAMON CLOUD	2
2.1 PREPERATIONS.....	2
2.2 FIRST TIME USE OF THE SOFTWARE	2
2.3 REGISTER A NEW DEVICE WITH A THERAMON® CHIP	3

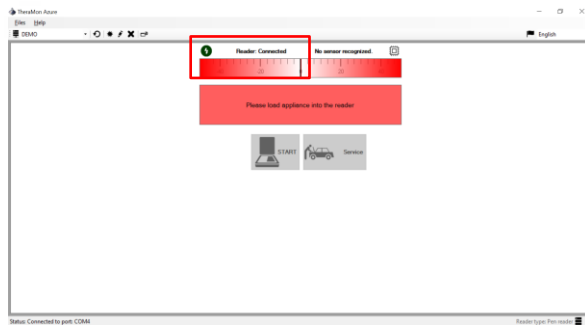
Register and test a Chip

Theramon Cloud

2. Register a chip with the Theramon Cloud

2.1 Preparations

1. Place a protective sheet around the Theramon (pen) reader
2. Attach the (pen) reader to the USB port of your computer
3. Start the TheraMon® Azure Client software
4. Check the measurements field (top left) to see if the (pen) reader is connected.



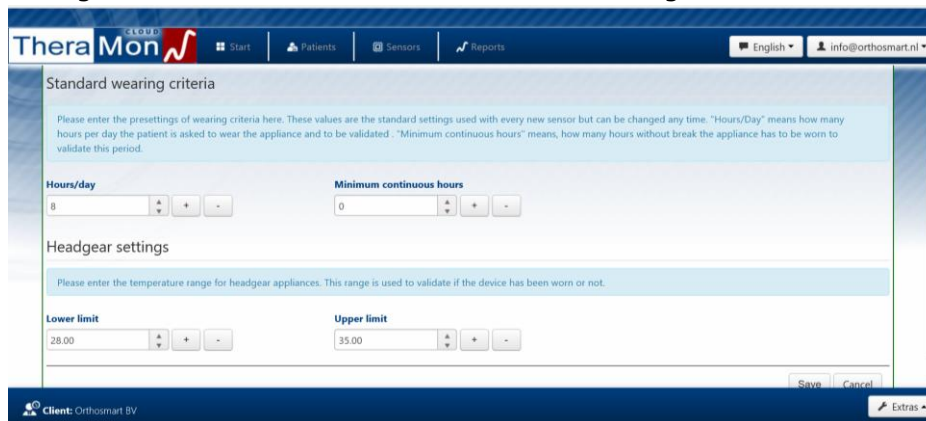
5. The field will be red and it will state "Reader: Connected".

2.2 First time use of the software

Important! There are a couple of settings you need to ensure correct chip registration.

You can, if needed, change these default settings in patientmanagement for each patient.

1. Goto the website <https://cloud.thera-mon.com> and sign in.
2. Goto Settings → Sensors
3. Change the default values for the desired wearing times



- a. Hours/day:
Here you will set the number of hours the patients need to wear the braces for. It is recommended to set this to 16 hours a day if patients should be wearing them during the day and night.
- b. Min. Hours in a stretch:
This is the number of hours a patient needs to have worn the braces in 1 continuous stretch. It is important to set this setting to "0". By default the setting is set to 2 hours. Which means that there is only 1 measurement each 2 hours. This could give a false picture of wearing time. For instance if a patient removes his braces for just a moment and the Chip registers a

Register and test a Chip

Theramon Cloud

wearing measurement during that time it is registered as not being worn during 2 hours.

2.3 Register a new device with a TheraMon® chip

When a dentist or researcher receives a device with a Chip from a dental technical laboratory the dentist needs to register that device in the Theramon Cloud and connect it to a patient. This can be done during the first appointment of the patient. It is preferred to do this on the day the patient receives his device. After registration the Theramon® chip will start measuring the wearing time.

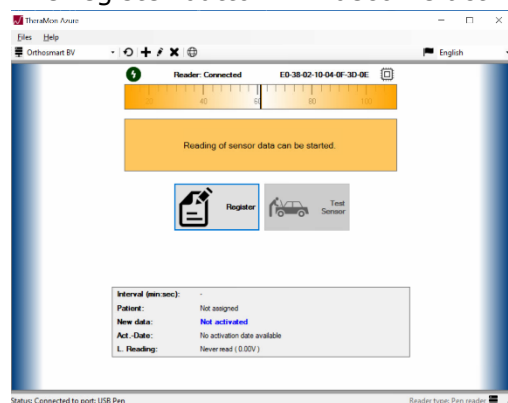
1. Place the chip in the device as close to the reader as possible

Make sure you keep the chip parallel to the reader and don't move it until the chip is registered.

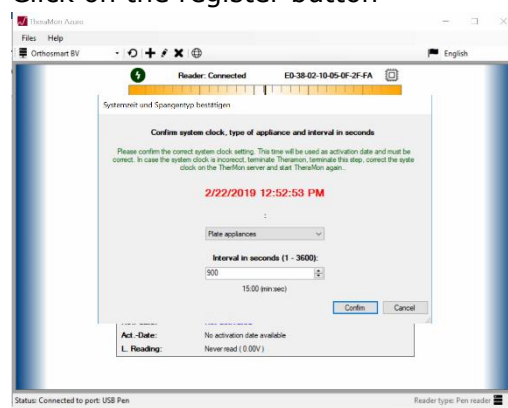
2. Register

By placing the chip as close as possible to the reader you will be able to register it using the Theramon Azure Client Software.

- a. Place the chip in front of the reader
- b. The register button will become active



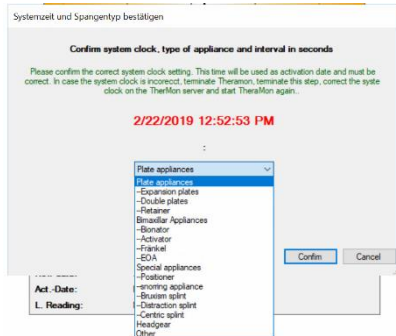
- c. Click on the register button



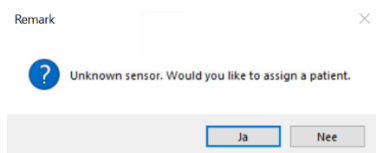
Register and test a Chip

Theramon Cloud

- d. Choose the type of braces



- e. Enter the reading interval. We advice you to set it to 900 seconden (15 minuten). If you set this to a lower number it will measure more frequently and diminish the lifespan of the chip.
- f. Click on confirm to store the data.
- g. You now need to create an new patient. Click on yes to assign/create a new patient



- h. Click on the plus sign at the top right
- i. Enter the patients details

- j. Click on ok to save the new patient details
- k. You can now place the chip in front of the reader again to start reading data.

